

# OPPEARLS

*(Editor's Note: If you have a clinical or practice management Pearl to share with your colleagues, send it to JCO, 1828 Pearl St., Boulder, CO 80302. Appropriate illustrations are welcome; a photograph of the author and a copyright transfer form are required prior to publication.)*

## Use of a Floss Threader with Elastomeric Ligature Thread

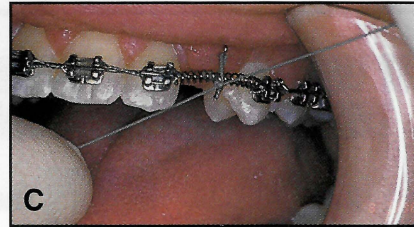
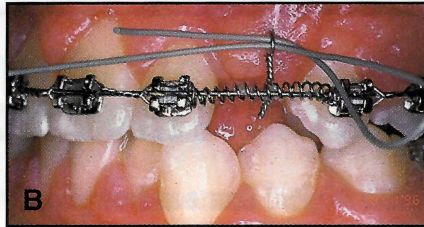
**E**lastomeric auxiliaries are often difficult to attach to impacted cuspids that are being moved into the arch. After surgery, a wire ligature or multiple eyelet chain\*<sup>1</sup> extending from a bonded button or eyelet may be all that is visible amid the swollen, edematous gingival tissue.

A floss threader\*\* can be used to pass an elastic thread through chain auxiliaries, providing more flexibility than a dental explorer. The technique is as follows:

1. Using a forefinger and thumb, sweep a slight curve into the floss threader.
2. Gently guide the floss threader through the eyelet bonded to the impacted tooth, displacing soft tissue as necessary (A).
3. Pass the elastomeric ligature through the posterior end of the threader. Slowly slide both through the bonded eyelet (B).
4. Secure the thread in the desired location (C).

\*No. 224-012 traction hook with chain, TP Orthodontics, Inc., 100 Center Plaza, LaPorte, IN 46350.

\*\*EEZ-Thru Floss Threader, John O. Butler Co., 4635 W. Foster Ave., Chicago, IL 60630.



### REFERENCES

1. Doleac, P.C. and Manga, R.K.: Technique Clinic: Multiple eyelet chain for impacted teeth, J. Clin. Orthod. 25:322, 1991.

NANCY SHACKLETON, DMD

Senior Resident

Department of Orthodontics, Pediatrics

and Geriatric Dentistry

University of Louisville

School of Dentistry

Louisville, KY 40292

