

# PRODUCT NEWS

## Wirebending Machine

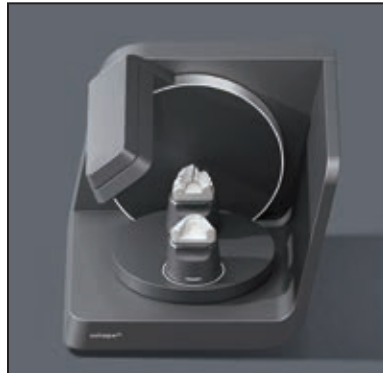
The Bender II robotic wirebending machine enables clinicians to fabricate fixed retainers on site in 10 minutes, according to the manufacturer. Only three steps are required: 3D scanning, wire design using the complementary software, and automatic wirebending. Retainers can be delivered immediately, with no additional bonding visit required. Models for both round and rectangular wires are available.



For more information, contact YOAT Corporation, 19105 36th Ave. W., Suite 209, Lynnwood, WA 98036. (425) 967-6165; www.yoatcorp.com.

## Scanner

The F8 lab scanner is engineered for efficient dual-model workflows, reducing technicians' hands-on time. New tools—including a height adaptor, articulator plate, and impression fixture—improve efficiency, according to the company, and the open design makes model placement fast and intuitive. Scanning begins as soon as models are in place, and the case is ready for design in Dental System software faster than with previous scanner models.



For more information, contact 3Shape North America, 10 Independence Blvd., Suite 150, Warren, NJ 07059. (908) 867-0144; www.3shape.com.

## Patient Chair

The Pro50 patient chair features a lightweight aluminum design, medical-grade motors for quiet operation, and a wide range of heights to accommodate different users and working styles. The backward-facing seat ensures ideal patient positioning when moving from a sitting to supine position, and the lifting mechanism maintains a consistent distance from the headrest to a 12-o'clock cabinet or tray, according to the company. An optional mobile base is available.



For more information, contact Planmeca USA, Inc., 100 N. Gary Ave., Suite A, Roselle, IL 60172. (630) 529-2300; www.planmecausa.com.

## Treatment Device

Designed to be used for 10 minutes per day to complement treatment with fixed appliances or clear aligners, the FDA-approved OrthoPulse device uses low levels of light energy to stimulate bone surrounding the roots of teeth, facilitating tooth movement and accelerating treatment, according to the manufacturer. The second generation of the device offers increased battery capacity, a plastic chassis to avoid wire breakage, and a new version of the accompanying app.



For more information, contact Ormco, 1717 W. Collins Ave., Orange, CA 92867. (800) 854-1741; www.ormco.com.

**PRODUCT NEWS is presented as a service to the reader and in no way implies endorsement by JCO.**