

PRODUCT NEWS

X-Ray Sensor

The DC-Air wireless intraoral sensor converts x-ray images directly into electronic signals to provide greater native sharpness compared with other sensors, according to the manufacturer. The sensor has a thin silhouette to ensure patient comfort and ease of positioning, and it is built with a sturdy casing and homogeneous internal components to withstand daily use.



For more information, contact Freedom Technologies Group, 4321 Goshen Road, Fort Wayne, IN 46818. (855) 664-1953; www.ftgimaging.com.

Chewing Gum

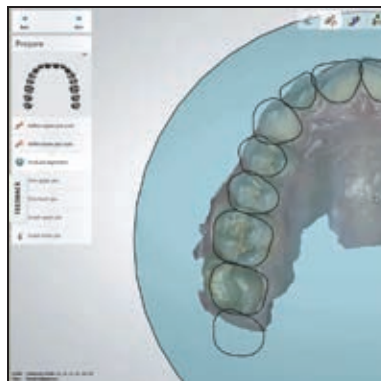
Liquid Core SMILE gum is formulated with xylitol and hydroxyapatite to strengthen tooth enamel and reduce plaque and bacteria whenever a toothbrush is not convenient, according to the company. As the gum is chewed, a liquid center releases activated charcoal to help remove stains from enamel; the gum turns from white to dark gray as the charcoal is absorbed.



For more information, contact Liquid Core, 2600 W. Eighth Ave., Denver, CO 80204. (303) 951-1259; www.liquidcore.store.

Software Update

3Shape's Dental System 2021.2 software update adds an optimized lab integration with the 3Shape Unite platform. Features include a real-time chat function, an automatic case-status update timeline, auto-filled forms, and a do-it-yourself profile builder for your lab. In addition, the software now integrates with Dentsply Sirona Connect Case Center to receive intraoral scan data.



For more information, contact 3Shape North America, 10 Independence Blvd., Suite 150, Warren, NJ 07059. (908) 867-0144; www.3shapedental.com.

Product Sample Packs

OrthoDots CLEAR and OrVance Retainer Cleaner are now available in professional dispensing packs, providing a convenient and low-cost way for orthodontic practices to distribute patient product samples, according to the company. Each sample pack includes four strips of the product, along with a patient instruction card. A QR code connecting the patient to educational videos is printed on the outside of each sample pack.



For more information, contact OrVance, 6477 Cherry Meadow Drive S.E., Suite 5, Caledonia, MI 49316. (888) 508-1290; www.orvance.com.

PRODUCT NEWS is presented as a service to the reader and in no way implies endorsement by JCO.