

PRODUCT NEWS

Clear Aligners

StarAlignersPro were designed by orthodontic professionals to help practices provide an affordable treatment option for mild to moderate alignment cases and tune-ups without the cost and stress of manufacturing clear aligners in-house. Made of barely visible Zendura FLX, the aligners provide a higher sustained force for more predictable tooth movement, according to the company.



The Star Portal case-management system is intended to give orthodontists more flexibility and control in treatment planning, resulting in shorter treatment times.

For more information, contact StarAligners, 2211 Midwestern Parkway, Suite 1, Wichita Falls, TX 76308. (877) 425-4468; www.staralignerspro.com.

CBCT Machine

With a 16cm x 8cm field of view, the Dentri Classic enables the clinician to scan the entire dentition in a single pass. Crisp panoramic imaging and advanced algorithms provide exceptional image quality for diagnosis, planning, and data transfer, according to the company. Also available is the Dentri Extended, with a 16cm x 14.5cm field of view, allowing inclusion of the facial structures. Each model comes with a five-year warranty on parts and labor and with free remote education.



For more information, contact Novadontics, 4710 Ruffner St., Suite B, San Diego, CA 92111. (888) 838-6682; www.novadontics.com.

Microfiber Towels

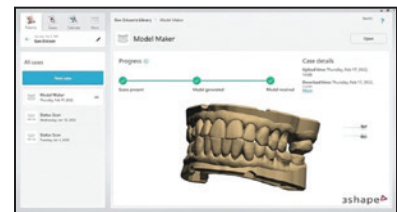
Shopserv microfiber towels, made from polyester and polyamide fibers 100 times smaller than a human hair, offer more surface area and greater absorbency for cleaning compared to cotton cloths, according to the manufacturer. Packaged in a convenient dispensing box, with a variety of colors to indicate different chemical use and help prevent cross-contamination, the 12" x 12" cloths are nonabrasive, non-linting, and machine-washable.



For more information, contact Hospeco Brands Group, 26301 Curtiss Wright Parkway, Suite 200, Cleveland, OH 44143. (800) 942-9199; www.hospecobrands.com.

Model Software

Model Maker works with 3Shape's TRIOS intraoral scanner and Studio applications to convert digital impressions into dental models in minutes, according to the company. Model Maker uses automatic hollowing for optimized resin use, drain holes to ensure optimal printing, and bevels in the base structure to facilitate removal from the build platform. This new application is included with TRIOS and TRIOS Design Studio, Splint Studio, and Implant Studio at no additional cost.



For more information, contact 3Shape North America, 10 Independence Blvd., Suite 150, Warren, NJ 07059. (908) 867-0144; www.3shapedental.com.

PRODUCT NEWS is presented as a service to the reader and in no way implies endorsement by JCO.