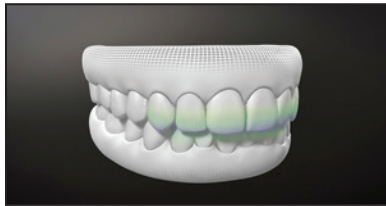


# PRODUCT NEWS

## Aligner Features

Invisalign G8 with new Smart Force Aligner Activation ensures sufficient and consistent activation for every aligner stage, according to the company. In crowding and crossbite cases, the protocol works with Optimized Expansion Support and Rotation attachments to avoid buccal crown tipping during posterior expansion. In deep-bite cases, the activation supports anterior intrusion, with an improved setup to level the curve of Spee. Doctors can also prescribe automatic placement of Precision Bite Ramps.



For more information, contact Align Technology, Inc., 2820 Orchard Parkway, San Jose, CA 95134. (408) 470-1000; www.aligntech.com.

## Laser Curing Light

The Monet Laser Curing Light is the first handheld laser curing device for dental materials, according to the manufacturer. Designed for coherent and consistent beam intensity, it can provide efficient curing in one second or less. Features include a compact laser module, parallel beam optics, an unrestricted rotatable head, and a convenient battery attachment.



For more information, contact AMD Lasers, 4628 W. Skyhawk Drive, West Jordan, UT 84084. (866) 999-2635; www.amdlasers.com.

## Desensitizing Gel

ZEN CP+ desensitizing gel alleviates sensitivity and discomfort by delivering nano-size calcium phosphate minerals to the tooth surface, according to the manufacturer, occluding and penetrating deep inside the dentinal tubules. The microsphere technology is designed to react with saliva to deliver mineral-forming calcium phosphate ions. Supplied in 45g tubes, ZEN CP+ can be brushed on as part of a daily oral-hygiene regimen.



For more information, contact DenMat Holdings, 1017 W. Central Ave., Lompoc, CA 93436. (800) 433-6628; www.denmat.com.

## Digital X-Ray Sensors

DentiMax Dream Sensors provide high-quality images with virtually any dental software program, according to the company. Rounded, beveled corners and a thin CMOS design enhance patient comfort; Kevlar-reinforced, repairable cables connect to a waterproof, tightly sealed housing with shock-absorbing corners. Two sizes are available.



For more information, contact DentiMax, 4115 E. Valley Auto Drive, Suite 101, Mesa, AZ 85206. (800) 704-8494; www.dentimax.com.

**PRODUCT NEWS is presented as a service to the reader and in no way implies endorsement by JCO.**