

PRODUCT NEWS

Thermoforming Material

Glacier is a durable, esthetic thermoforming material for aligners and retainers, featuring Grab-Force technology for precise tooth movement. According to the manufacturer, the flexible, comfortable material adapts to undercuts and gingival embrasures while also providing a high range of activation and memory. Made in the United States, Glacier is available in 125mm round or 5" x 5" square sheets, in .030", .035", and .040" sizes.



For more information, contact DynaFlex, 10403 International Plaza Drive, St. Ann, MO 63074. (866) 346-5665; www.dynaflex.com.

Aligner Instruments

Four new instruments for making precise aligner adjustments have been added to the Clear Collection for Clear Aligners. The Spot creates a small, round dimple, and the Petite Punch cuts out a 4.5mm half-moon shape. The Distal and Mesial Wedges add wedge-shaped indents and corresponding angle depressions for rotational couples; the Eraser removes unwanted indents. No heat is required to make adjustments, according to the manufacturer.



For more information, contact Hu-Friedy Manufacturing Co., LLC, 3232 N. Rockwell St., Chicago, IL 60618. (800) 483-7433; www.hu-friedy.com.

Isolation System

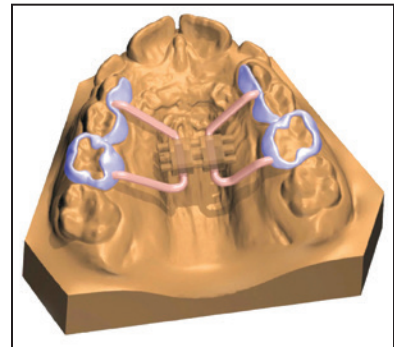
The Isovac 2's continuous, hands-free suction is designed to reduce spray, spatter, and aerosols for infection control. Made from a biocompatible polymer, the upgraded system is 200% quieter than the original, yet still evacuates as much as 6L of saliva and debris and 6.5ft³ of air per minute, according to the manufacturer. The Isovac mouthpiece isolates two quadrants at a time while providing airway protection and tongue and cheek retraction. The control head connects to a high-volume evacuation line and should be autoclaved after each use.



For more information, contact Zyris, Inc., 6868A Cortona Drive, Santa Barbara, CA 93117. (805) 560-9888; www.zyris.com.

CAD/CAM Expander

LeoneAmerica has introduced the first rapid palatal expander designed for a fully digital workflow. According to the company, the digital design process improves fabrication and cost-efficiency and ensures a more accurate and predictable result. Customizable hybrid, toothborne, or boneborne RPEs can be created, using squared slots instead of arms for attachment to a laser-sintered framework. Enhanced strength and self-centering guides make the appliance ideal for MARPE techniques. Sizes of 8mm, 10mm, and 12mm are available.



For more information, contact LeoneAmerica Dental Products, Inc., 1250 Stellar Drive, Oxnard, CA 93033. (800) 235-4639; www.leoneamerica.com.

PRODUCT NEWS is presented as a service to the reader and in no way implies endorsement by JCO.