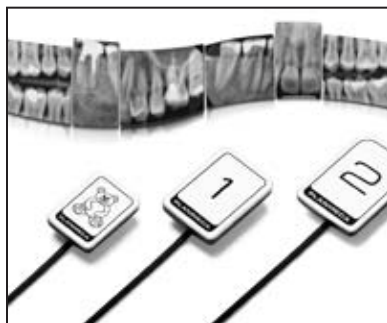


PRODUCT NEWS

Intraoral Sensor

Planmeca's ProSensor HD has a fiberoptic layer that can capture high-contrast images at a resolution of 20lp/mm, according to the manufacturer. Available in three sizes, the intraoral sensor has rounded edges for patient comfort. It is fully compatible with both Mac and Windows operating systems, and it can be integrated into the Planmeca ProX intraoral x-ray unit or connected through an Ethernet or USB port.



For more information, contact Planmeca USA, Inc., 100 N. Gary Ave., Suite A, Roselle, IL 60172. (630) 529-2300; www.planmecausa.com.

Bracket Line

Great Lakes Orthodontics now offers a full line of fixed appliances, including the EasyClip Self-Ligating and the BioTru Classic, Sapphire, and Ceramic bracket systems. According to the company, these systems offer maximum versatility and reliability, are easy to place, have low profiles, facilitate secure bonding, and enhance patient comfort.



For more information, contact Great Lakes Orthodontics, 200 Cooper Ave., Tonawanda, NY 14150. (800) 828-7626; www.greatlakesortho.com.

Cleaning Monitors

New Cleaning Monitors from Hu-Friedy are designed to evaluate the efficiency of washer-disinfectors and ultrasonic cleaners. Each strip has a test soil simulating the blood and tissue that may be found on instrument surfaces; full removal of the soil indicates an effective cleaning process, according to the manufacturer.



For more information, contact Hu-Friedy Manufacturing Co., 3232 N. Rockwell St., Chicago, IL 60618. (800) HU-FRIEDY; www.hu-friedy.com.

Implant Software

The U.S. Food and Drug Administration has granted market clearance for the latest version of 3Shape Implant Studio software. Suitable for prosthetic-implant planning and surgical-guide design, the software merges cone-beam computed tomography scans with intraoral three-dimensional digital impression files, allowing bone density and nerve positions to be evaluated before surgery. According to the company, this version incorporates more than 20 new functional improvements.



For more information, contact 3Shape North America, 10 Independence Blvd., Suite 150, Warren, NJ 07059. (908) 867-0144; www.3shapedental.com.

PRODUCT NEWS is presented as a service to the reader and in no way implies endorsement by JCO.