



PEARLS

Sturdy Hooks for Elastics Attachment

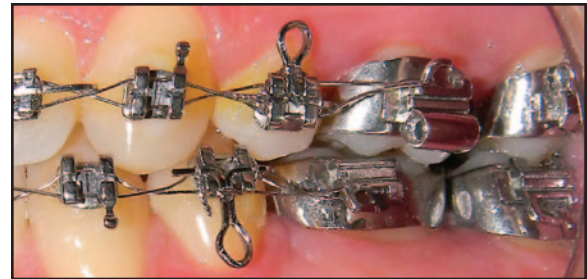
Although intermaxillary elastics are often used to settle the occlusion during the finishing stage of orthodontic treatment, many bracket systems do not include hooks for elastics attachment. Kobayashi or custom-made ligature hooks¹ tend to bend labially when used with heavy elastics, especially during placement and removal, and elastics can even pop loose from the hooks on mouth opening.

We have devised a simple, stiff hook—named the “PGI hook” after our Post-Graduate Institute—for use with intermaxillary elastics in patients bonded with twin brackets.

Fabrication

1. Form a 2mm-diameter bull loop in a segment of .016" × .022" (for .018" slots) or .019" × .025" (for .022" slots) rectangular stainless wire. Place a 90° bend in each leg so that the legs lie flat in the same horizontal plane (A).
2. Place medial bends in the legs, 2-3mm from the neck of the loop, and cut away the excess wire (B).
3. Engage the PGI hook in the bracket slot and ligate it tightly (C).

Since the hook fills the main archwire slot, it can be used only when a main archwire is not in place, and it may be difficult to engage in small brackets with short distances between the mesial and distal tie wings. Still, we have found the PGI hook to be useful in our practice; it is easily fabricated and will not deform under forces from elastics, mastication, or oral hygiene. Patients find it much easier and more comfortable to wear their



elastics with the PGI hooks than with conventional ligature hooks.

REFERENCES

1. Yadav, S. and Upadhyay, M.: Custom-made ligature hooks for engaging elastics, *J. Clin. Orthod.* 41:39-40, 2007.

RAJ KUMAR VERMA, BDS
Junior Resident

ASHOK KUMAR JENA, MDS
Assistant Professor
ashokkjena@yahoo.co.in

SATINDER PAL SINGH, MDS
Additional Professor

ASHOK KUMAR UTREJA, MDS
Professor and Head
Unit of Orthodontics
Oral Health Sciences Centre
Post-Graduate Institute of
Medical Education and Research (PGIMER)
Chandigarh, UT
India

