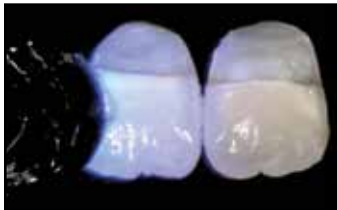


The Cover

An arrangement of white pearls is featured on this month's cover.
Photo © Adaychou | Dreamstime.com.



24 Molar Uprighting



27 Space Maintainer



31 Screw Reactivation

DEPARTMENTS

The Editor's Corner 9
 Contributors' Guide 52
 Book Reviews 53
 Continuing Education 55
 Product News 57
 Classified. 58
 Index of Advertisers 59

**2011 JCO Orthodontic Practice Study
Part 4 Additional Breakdowns**

ROBERT G. KEIM, DDS, EDD, PHD
 EUGENE L. GOTTLIEB, DDS
 ALLEN H. NELSON, PHD
 DAVID S. VOGELS III

The series concludes with comparisons of male and female orthodontists and an analysis of the influence of management service organizations.

15

**The G-Chain and Miniscrew Anchorage:
Simple Mechanics for Molar Uprighting**

MARIO GRECO, DDS
 VIVIANA MEDDIS, DDS
 ALDO GIANCOTTI, DDS

A miniscrew in the retromolar area provides anchorage for a mesially inclined lower second molar.

24

CLINICAL AID

**A Modified Plier for Crimping
a Double-Back Bend**

Y. MOHAMED HASHIR, MDS

A universal plier is customized using a laboratory welder.

26

**A Space Maintainer for Growing Patients
with Avulsed Central Incisors**

MATHEUS MELO PITHON, DDS, MS, PHD
 ÉLIDA BOAVENTURA MENDES, DS
 RICARDO ALVES DE SOUZA, DDS, MS
 LÍVIA MARIA ANDRADE DE FREITAS, DDS, MS, PHD

The avulsed incisor crowns are incorporated into a sturdy, temporary appliance anchored to the molars.

27

TECHNIQUE CLINIC

**Simple Reactivation of a
Haas Expansion Screw**

ERNANI MENEZES MARCHIORO, DDS, MOrth
 STEFAN CARDON, DDS, MOrth
 GABRIEL SCHMIDT DOLCI, DDS, MOrth

This streamlined technique increases screw capacity.

31

THE READERS' CORNER

JOHN J. SHERIDAN, DDS, MSD

Topics are dental-trauma cases and readers' hobbies and activities outside orthodontics.

33



The opinions expressed in the *Journal of Clinical Orthodontics* are those of the writers and do not necessarily reflect the opinions and policies of JCO. Copyright © 2012 JCO, Inc. *Journal of Clinical Orthodontics* (USPS 802-120, ISSN 0022-3875) is published monthly for \$260 per year (U.S. individual rate) by JCO, Inc., 1828 Pearl St., Boulder, CO 80302-5519. Periodicals postage paid at Boulder, CO, and additional mailing office. POSTMASTER: Send address changes to JCO, 1828 Pearl St., Boulder, CO 80302-5519. Phone: (303) 443-1720; e-mail: info@jco-online.com. The material in each issue of JCO is protected by copyright. Instructions and fees for copying articles from JCO are available from the Copyright Clearance Center, (978) 750-8400; www.copyright.com.

TECHNIQUE CLINIC

Micro-Implant Positioning Guide

HEMANTH M., BDS, MDS
G.S. PATIL, BDS, DOrth, MDS
SUDHANSHU VERMA, BDS

Simple wire bending produces a versatile and easy-to-use guide.

37



37 Micro-Implant Guide

PEARLS

Color-Coded Elastomeric Modules for Elastics Placement

DANIEL KENNEDY, BDS, DCLinDent(Ortho),
MOrth RCS, MRACDS

This protocol is easy for patients and parents to follow.

39

Palatal Clips for Canine Retraction

SUMIT KUMAR YADAV, BDS, MDS
DARA SINGH YADAV, BDS

Retraction is accomplished quickly and esthetically.

40



40 Canine Retraction

Securing a Lingual Retainer Wire with Orthodontic Separators

ROHAN S. HATTARKI, BDS, MDS
K.M. KELUSKAR, BDS, MDS

The lingual retainer can be direct-bonded before or after removal of labial appliances.

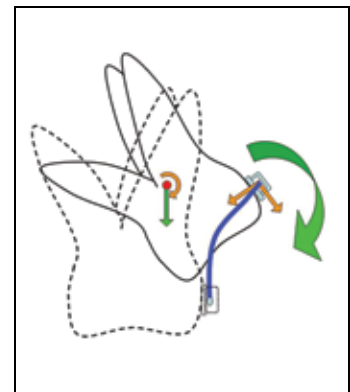
41

Distalization of an Ectopic Molar in the Early Mixed Dentition

ASHOK KOTHARI, BDS, MDS

A bonded palatal expander provides anchorage for molar uprighting and distalization.

42



45 Second-Molar Control

Eruption Control of Maxillary Second Molars with a Segmental Overlay Wire

ANNA MENINI, DMD
PAOLO COZZANI, DMD
MAURO COZZANI, DMD, MSCD

A nickel titanium wire segment efficiently controls a buccally erupting second molar near the end of treatment.

45



48 Maxillary Molar Intrusion

Maxillary Molar Intrusion with a Single Miniscrew and a Transpalatal Arch

MOONYOUNG LEE, DMD
JEROME SHUMAN, DMD, MS

This adult patient requested an esthetic treatment plan prior to placement of dental implants.

48